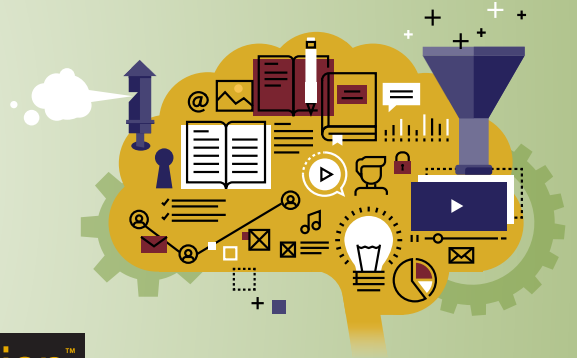


# PPAI Professional Development

Admired. Trusted. Respected.



## PPAI Certification™

### Trained Advertising Specialist (TAS) Certificate

The TAS provides promotional products professionals, who are new to the industry, a source for answers and knowledge about the industry.

#### Here's how to earn your TAS:

1. Meet the following criteria:
  - Serve in a position with a promotional products company.
  - Possess a PPAI login (formerly UPIC). If you don't have a login, contact 888-I-AM-PPAI (426-7724).
2. Log in to PPAI's Online Education platform at [onlineeducation.ppai.org/TAS](https://onlineeducation.ppai.org/TAS).
3. Under "Trained Advertising Specialist Package", click "Register".
4. Click "Complete Registration Now", enter your payment information, and complete your order.
5. Once you're registered, you can navigate to the Trained Advertising Specialist Package from the Online Education Home page > My Learning > My Webinars.
6. Complete the TAS Required Courses, along with the quiz associated with each course.
  - You will have 3 attempts to pass each quiz. You must correctly answer 4 of 5 questions.
7. Review your Certification Transcript to ensure you've completed all course requirements.
  - From the Online Education Home page, click "PPAI Certification > My PPAI Transcript".
8. Return to the Trained Advertising Specialist Package to complete and submit the Trained Advertising Specialist Certificate (TAS) Package Application by uploading it online.
9. The PPAI Professional Development team will review your application and issue your TAS Certificate if you meet all the criteria and completion requirements.

This is a certificate of completion, not a certification, so there are no recertification requirements.

#### TAS Program Fees

- PPAI Members: \$25
- PPAI Associates: \$50

#### Eligible For The Fast Track Program?

The PPAI Fast Track Program is for professionals with 3(+) years of verifiable industry experience. By taking the Fast Track, you waive the TAS course requirement of viewing webinars, and open all quizzes for immediate testing. Visit the certification website: [ppai.org/members/certification/certification-programs](https://ppai.org/members/certification/certification-programs) to see program requirements and fees. If you meet the requirements, register and complete the Fast Track TAS application form.

Questions? Email [certification@ppai.org](mailto:certification@ppai.org)