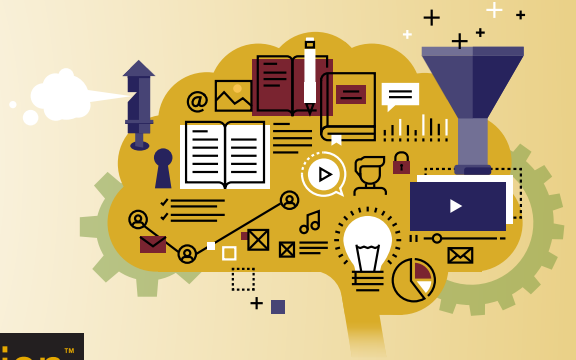


PPAI Professional Development

Admired. Trusted. Respected.



PPAI Certification™



Certified Advertising Specialist (CAS) Certification

The CAS is an earned certification signifying your knowledge and experience in the promotional products industry. CAS candidates have been certified by PPAI since 1961, in all 50 U.S. States and in more than 15 countries around the world.

Here's how to earn your CAS:

1. Make sure you meet the following criteria:
 - Possess a TAS Certificate.
 - Serve in a position with a promotional products company.
2. Log in to PPAI's Online Education platform at **onlineeducation.ppai.org**.
3. In the middle of the page, click "Certification Courses > CAS"
4. Under "CAS Required Courses > Certified Advertising Specialist Package", click "Register".
5. Click "Complete Registration Now", enter your payment information, and complete your order.
6. Once you're registered, you can navigate to the Certified Advertising Specialist Package from the Online Education Home page > My Learning > My Webinars.
7. Complete the CAS dedicated course package (approx. 25 courses), along with the quiz associated with each course.
 - You will have 3 attempts to pass each quiz. You must answer 4 of 5 questions correctly.
 - If you have not passed a quiz after 3 attempts, please contact **certification@ppai.org**.
8. Earn 25 CAS or MAS-level elective education points.
9. Review your Certification Transcript to ensure you've completed all requirements.
10. Complete and submit the Certified Advertising Specialist Certification (CAS) Package Application.
11. The PPAI Professional Development team will review your application and issue your CAS Certification if you meet all the criteria and completion requirements.

CAS Program Fees

- PPAI Members: CAS Application Fee = \$225 • CAS Recertification Fee = \$75
- PPAI Associates: CAS Application Fee = \$325 • CAS Recertification Fee = \$150

Want To Take The Fast Track?

The PPAI Fast Track Program is for professionals with 3(+) years of verifiable industry experience. By taking the Fast Track, you waive the TAS certificate requirement, CAS course requirement of viewing webinars, and elective education point requirement; and you open all quizzes for immediate testing. The program requirements and fees can be found on the certification website: **ppai.org/members/certification/certification-programs**.

Questions? Email **certification@ppai.org**